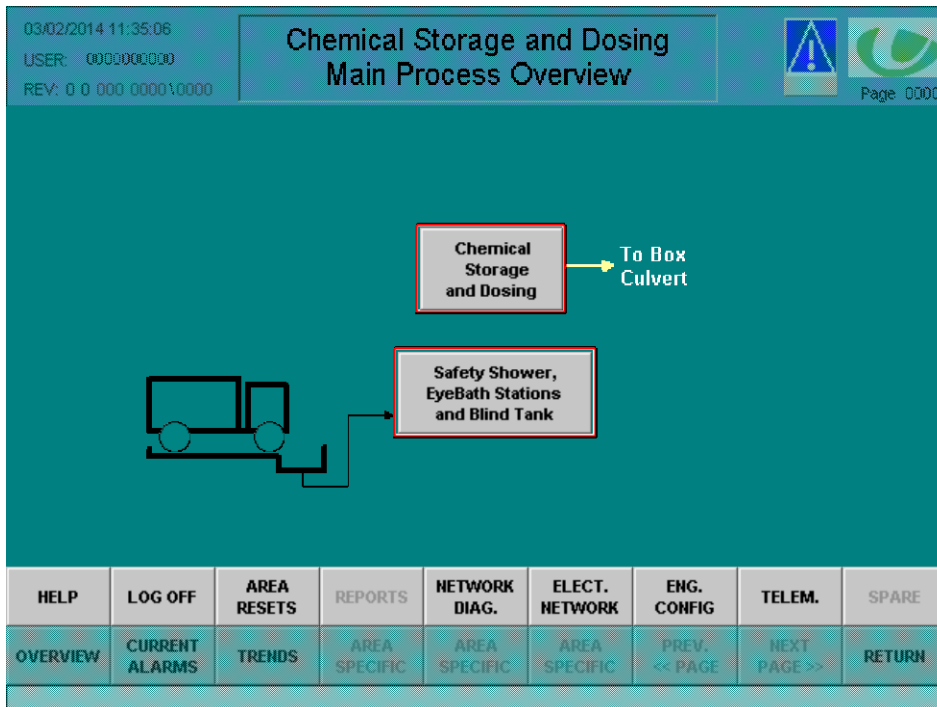


Screens

|HMI_277 (HMI05)|Screens|5xxxx_HMI|0-MAIN OVERVIEW 5xxxx_HMI|0-MAIN OVERVIEW|001_PROCESS_OVERVIEW

Using template True
 Number 1
 Visible layer 0;1;2;3;4;5;6;7;8;9;10;11;12;13;14;15;16;17;18;19;20;21;22;23;24;25;26;27;28;29;30;31
 Infotext



Not sure about this page. but might be worth leaving as is for now.

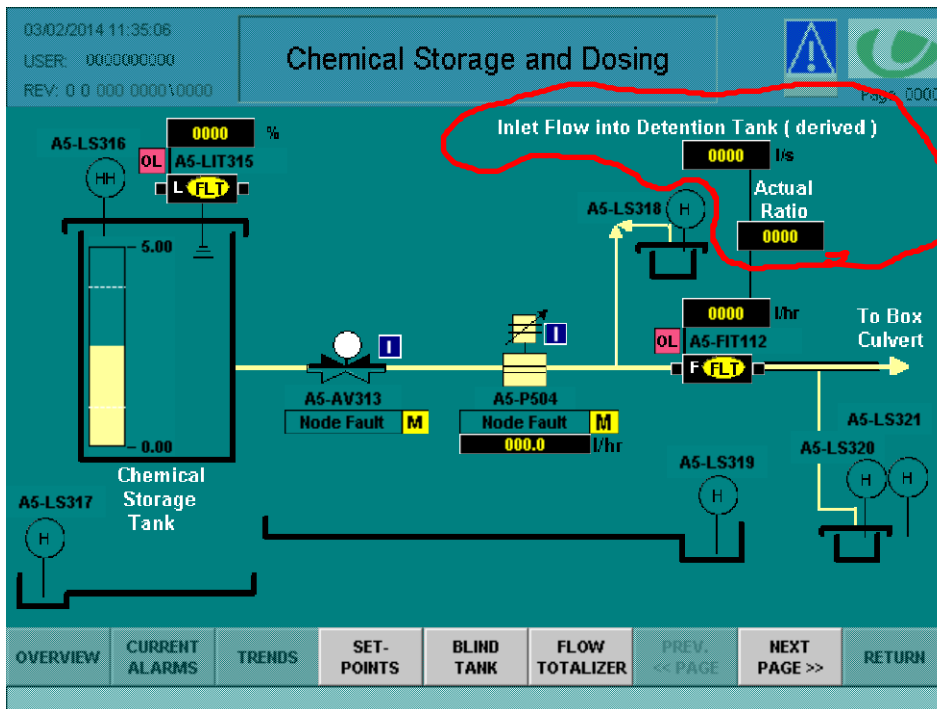
Dynamic

Name = Event; State = Enabled; Property = Loaded; Function list = Revision();

Screens

**|HMI_277 (HMI05)|Screens|5xxxx_HMI|1-DETAIL MIMICS|1.1 AREA 1
5xxxx_HMI|1-DETAIL MIMICS|1.1 AREA 1|110_DOSING_MIMIC**

Using template True
Number 110
Visible layer 0;3;4;5;6;7;8;9;10;11;12;13;14;15;16;17;18;19;20;21;22;23;24;25;26;27;28;29;30;31
Infotext



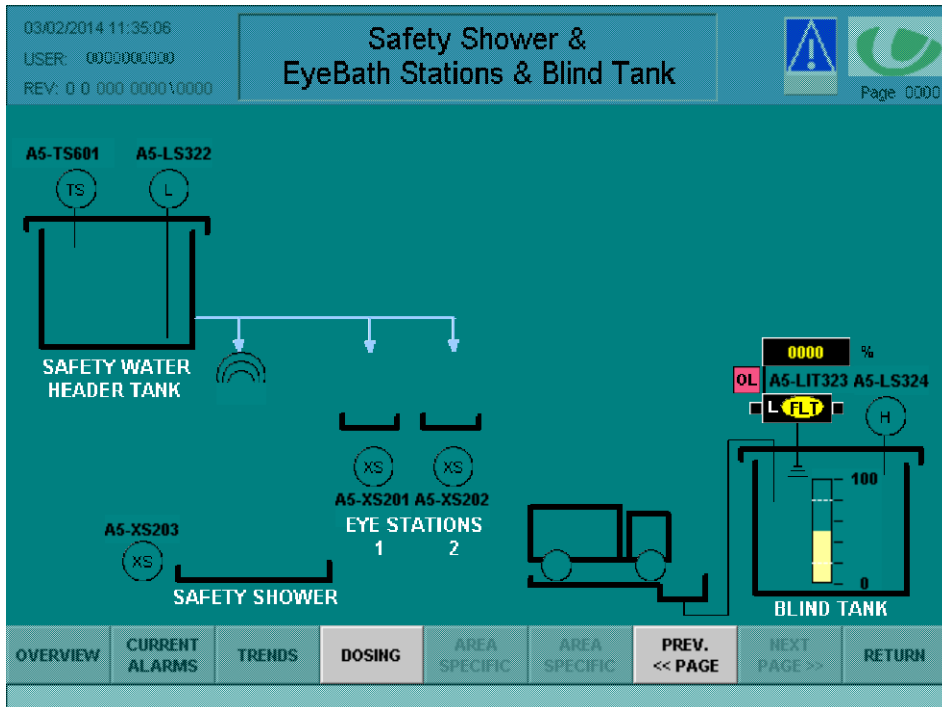
level in % (as per rest of tyldesley project - on fill bar)

i would put this text in the empty space.
Ratio needs units?

Screens

|HMI_277 (HMI05)|Screens|5xxxx_HMI|1-DETAIL MIMICS|1.1 AREA 1 5xxxx_HMI|1-DETAIL MIMICS|1.1 AREA 1|111_WASH_STATIONS

Using template True
Number 111
Visible layer 0;3;4;5;6;7;8;9;10;11;12;13;14;15;16;17;18;19;20;21;22;23;24;25;26;27;28;29;30;31
Infotext

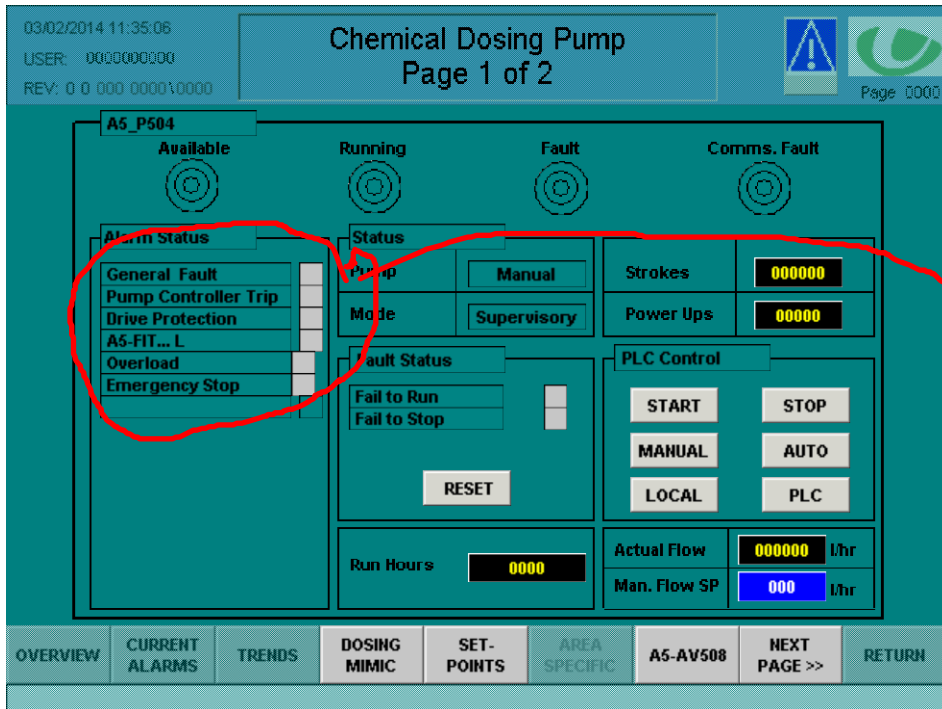


ok

Screens

**|HMI_277 (HMI05)|Screens|5xxxx_HMI|2-PLANT DEVICES|2.1 AREA 1 DEVICES
5xxxx_HMI|2-PLANT DEVICES|2.1 AREA 1 DEVICES|211_P504_DOSINGPUMP_Pg1**

Using template True
Number 211
Visible layer 0;1;2;3;4;5;6;7;8;9;10;11;12;13;14;15;16;17;18;19;20;21;22;23;24;25;26;27;28;29;30;31
Infotext



alignment of alarms needs resolution

Screens

|HMI_277 (HMI05)|Screens|5xxxx_HMI|2-PLANT DEVICES|2.1 AREA 1 DEVICES 5xxxx_HMI|2-PLANT DEVICES|2.1 AREA 1 DEVICES|212_P504_DOSINGPUMP_Pg2

Using template True
 Number 212
 Visible layer 0;1;2;3;4;5;6;7;8;9;10;11;12;13;14;15;16;17;18;19;20;21;22;23;24;25;26;27;28;29;30;31
 Infotext

03/02/2014 11:35:06

Chemical Dosing Pump

Page 2 of 2

USER: 0000000000
REV: 0 0 000 0000\0000
Page 0000

A5_P504 - CONFIGURATION & ALARM

Internal Alarm	Fault Status
Diaphragm Break	Bleed Disable
Dry Running	Communication Watchdog Disable
Over temperature	Auto Restart after Alarm Disable
Internal Comms Fault	Anti - Cavitation Disable
EEPROM Fault	Maximum Flow Setpoint 000000 l/hr Actual Value 000000 l/hr
Sensor Fault	
Display Comms Fault	
Origo Sensor Fault	
Hall Sensor Fault	

OVERVIEW
CURRENT ALARMS
TRENDS
AREA SPECIFIC
AREA SPECIFIC
AREA SPECIFIC
PREV. << PAGE
NEXT PAGE >>
RETURN

Screens

|HMI_277 (HMI05)|Screens|5xxxx_HMI|2-PLANT DEVICES|2.1 AREA 1 DEVICES 5xxxx_HMI|2-PLANT DEVICES|2.1 AREA 1 DEVICES|213_AV508_TANKOUTLETVLV

Using template True
Number 213
Visible layer 0;1;2;3;4;5;6;7;8;9;10;11;12;13;14;15;16;17;18;19;20;21;22;23;24;25;26;27;28;29;30;31
Infotext

03/02/2014 11:35:06
USER: 0000000000
REV: 0 0 000 0000\0000

Chemical Tank
Outlet Valve

A5-AV508

Available Fault Comms. Fault

Status

Mode Manual

Status Node Fault

Fault Status

Fail to Open

Fail to Close

RESET

PLC Control

OPEN CLOSE

MANUAL AUTO

OVERVIEW CURRENT ALARMS TRENDS SET-POINTS DOSING MIMIC BLIND TANK PREV. << PAGE NEXT PAGE >> RETURN

Screens

**|HMI_277 (HMI05)|Screens|5xxxx_HMI|2-PLANT DEVICES|2.1 AREA 1 DEVICES
5xxxx_HMI|2-PLANT DEVICES|2.1 AREA 1 DEVICES|220_CALCULATION_PAGE1**

Using template True
Number 220
Visible layer 0;1;2;3;4;5;6;7;8;9;10;11;12;13;14;15;16;17;18;19;20;21;22;23;24;25;26;27;28;29;30;31
Infotext

03/02/2014 11:35:06
USER: 0000000000
REV: 0 0 000 0000\0000

Chemical Dosing
Inlet Flow Calculation

Page 0000

Calculating Inlet Flow from change in height of the Detention Tank in a 10 second period.

$$\frac{\text{ChngelnHeight} \times \text{VolumePerVerticalMtr} \times \text{NoLtrslnCubicMtr}}{\text{Time Interval}}$$

0.000 m x 000.0 m³ / m x 1000 l / m³ = 0000 l/sec

10 seconds

For example

$$\frac{0.08 \times 314.2 \times 1000}{10} = 2513 \text{ l/sec}$$

OVERVIEW CURRENT ALARMS TRENDS SET-POINTS WASH STATIONS BLIND TANK PREV. << PAGE NEXT PAGE >> RETURN

looks good.

As operators not software engineers, can you make text in circled area full text with spaces? rather than looking tag names.

Screens

|HMI_277 (HMI05)|Screens|5xxxx_HMI|2-PLANT DEVICES|2.1 AREA 1 DEVICES 5xxxx_HMI|2-PLANT DEVICES|2.1 AREA 1 DEVICES|222_CALCULATION_PAGE2

Using template True
 Number 222
 Visible layer 0;1;2;3;4;5;6;7;8;9;10;11;12;13;14;15;16;17;18;19;20;21;22;23;24;25;26;27;28;29;30;31
 Infotext

03/02/2014 11:35:06
 USER: 0000000000
 REV: 0 0 000 0000\0000

Chemical Dosing
 Dosing Calculation

Page 0000

Calculating Dosing Flow Setpoint

$$\frac{\text{InletFlow} \times \text{NoOfSecsInAnHour} \times \text{DoseRate ppm}}{\text{No_of_Milli_Ltrs_in_a_CubicMetre}}$$

$$\frac{0000 \text{ l/sec} \times 3600 \text{ secs / hr} \times 000.0 \text{ m l / m}^3}{1,000,000 \text{ ml / m}^3} = 000.0 \text{ l/hr}$$

For example

$$\frac{2513 \times 3600 \times 50}{1,000,000} = 452 \text{ l/hr}$$

OVERVIEW CURRENT ALARMS TRENDS SET-POINTS WASH STATIONS BLIND TANK PREV. << PAGE NEXT PAGE >> RETURN

spaces in text here too please.

nice layout tho, really obvious where the numbers are coming from!



Screens

| HMI_277 (HMI05) | Screens | 5xxxx_HMI | 2-PLANT DEVICES | 2.1 AREA 1 DEVICES 5xxxx_HMI | 2-PLANT DEVICES | 2.1 AREA 1 DEVICES | 230_FLOW_TOTALISER

Using template True
Number 230
Visible layer 0;1;2;3;4;5;6;7;8;9;10;11;12;13;14;15;16;17;18;19;20;21;22;23;24;25;26;27;28;29;30;31
Infotext

03/02/2014 11:35:06
USER: 0000000000
REV: 0 0 000 0000\0000

Chemical Dosing Flow Totaliser



Page 0000

CHEMICAL DOSING INSTANTANEOUS FLOW (A5-FIT112)	
Instantaneous flow (l/hr)	000.00
CHEMICAL DOSING NET TOTAL FLOW (A5-FIT112)	
Accumulated Total Flow To Date : RESETTABLE (m3)	0000000000 Reset
Accumulated Flow To Date : NON-RESETTABLE (m3)	0000000000
DAILY FLOW TOTALS (A5-FIT112) : [00:00 - 23:59]	
Today's Total Flow Since Midnight Last Night (m3)	0000000000
Yesterday's Daily Total Flow (m3)	0000000000

OVERVIEW
CURRENT ALARMS
TRENDS
SET-POINTS
DOSING MIMIC
BLIND TANK
PREV. << PAGE
NEXT PAGE >>
RETURN

ok

Screens

| HMI_277 (HMI05) | Screens | 5xxxx_HMI | 3-SETPOINTS | 3.1 AREA 1 5xxxx_HMI | 3-SETPOINTS | 3.1 AREA 1 | 311_CHEMICALSETPOINTS

Using template True
Number 311
Visible layer 0;1;2;3;4;5;6;7;8;9;10;11;12;13;14;15;16;17;18;19;20;21;22;23;24;25;26;27;28;29;30;31
Infotext

03/02/2014 11:35:06

USER: 0000000000

REV: 0 0 000 0000\0000

Chemical Setpoints

Page 0000

A5-LIT315	Chemical Re-Order level [20%]	000	%
A5-P504	Proportional Dosing Set Point [50ppm]	0.00	ppm
A5-P504	Start up flow [312 l/hr]	000	l/hr
A5-P504	Proportional Dosing Delay Timer [180 secs]	000	secs
A5-LIT312	Dosing Stop Timer [180 secs] (because 'Level not risen')	000	secs
A5-LIT312	Detention Tank Volume per vertical mtr [314.20 m3]	000.0	m3
A5-LIT312	Actual Tank Height	00.00	m
A5-LIT312	Level check Interval Timer	000	m
A5-FIT112	Flow Rate not reached [180secs]	000	secs
	Preset Flow SP for Pump if Flowmeter has failed	000.0	l/hr
	If Ultrasonic LIT312 fails - Continue Dosing for	000	mins
A5-LIT323	Blind Tank High Level [80%]	000	%

OVERVIEW

CURRENT ALARMS

TRENDS

DOSING MIMIC

AREA SPECIFIC

AREA SPECIFIC

PREV. << PAGE

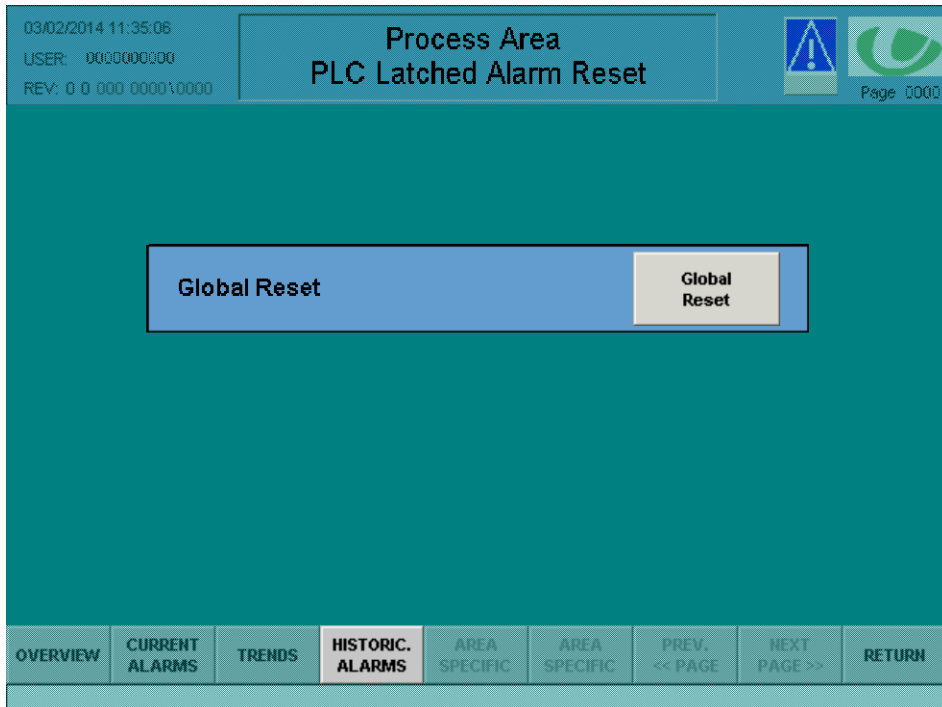
NEXT PAGE >>

RETURN

Screens

|HMI_277 (HMI05)|Screens|5xxxx_HMI|4-ALARMS|4.1 ALARM HANDLING 5xxxx_HMI|4-ALARMS|4.1 ALARM HANDLING|410_AREA_RESETS

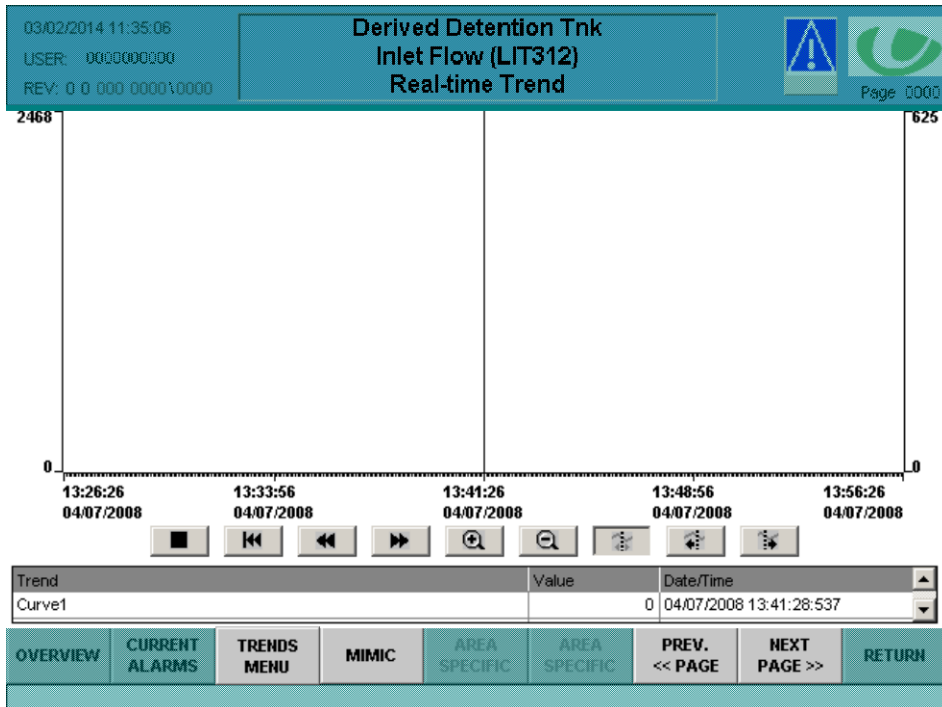
Using template True
Number 410
Visible layer 0;1;2;3;4;5;6;7;8;9;10;11;12;13;14;15;16;17;18;19;20;21;22;23;24;25;26;27;28;29;30;31
Infotext



Screens

**|HMI_277 (HMI05)|Screens|5xxxx_HMI|5-TRENDS|5.1 AREA 1
5xxxx_HMI|5-TRENDS|5.1 AREA 1|511_RealTimeTrend_LIT312**

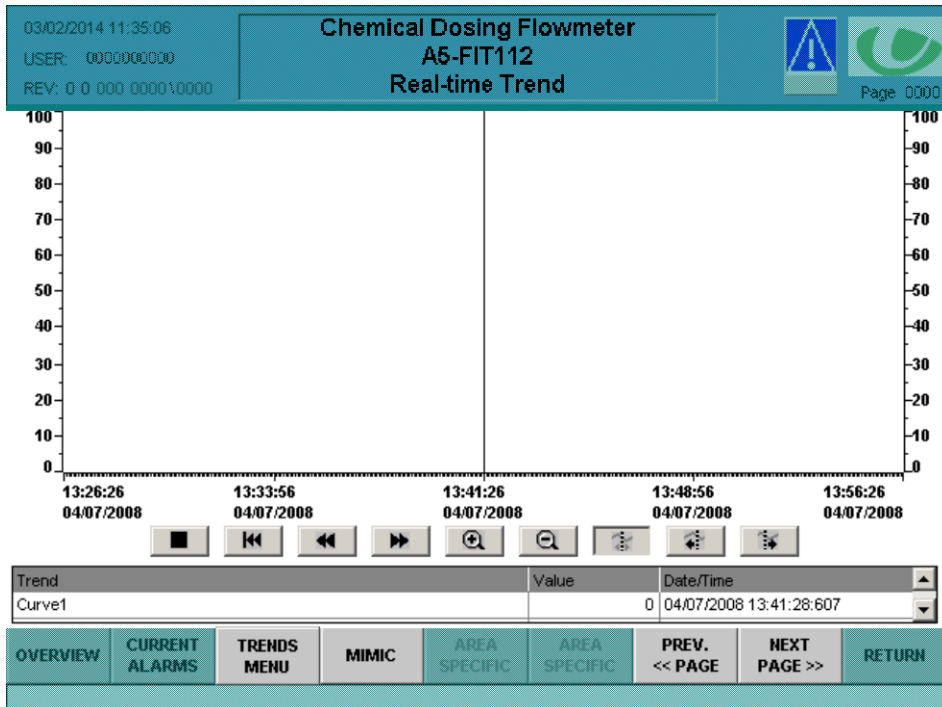
Using template True
Number 511
Visible layer 0;1;2;3;4;5;6;7;8;9;10;11;12;13;14;15;16;17;18;19;20;21;22;23;24;25;26;27;28;29;30;31
Infotext



Screens

|HMI_277 (HMI05)|Screens|5xxxx_HMI|5-TRENDS|5.1 AREA 1 5xxxx_HMI|5-TRENDS|5.1 AREA 1|512_RealTimeTrend_FIT112

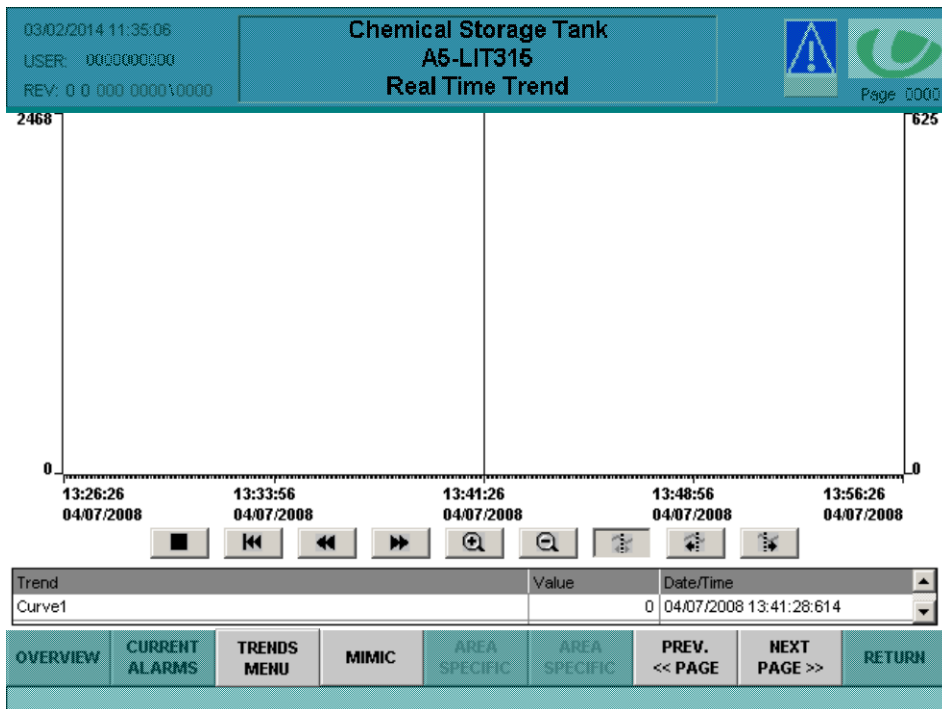
Using template True
Number 512
Visible layer 0;1;2;3;4;5;6;7;8;9;10;11;12;13;14;15;16;17;18;19;20;21;22;23;24;25;26;27;28;29;30;31
Infotext



Screens

|HMI_277 (HMI05)|Screens|5xxxx_HMI|5-TRENDS|5.1 AREA 1 5xxxx_HMI|5-TRENDS|5.1 AREA 1|513_RealTimeTrend_LIT315

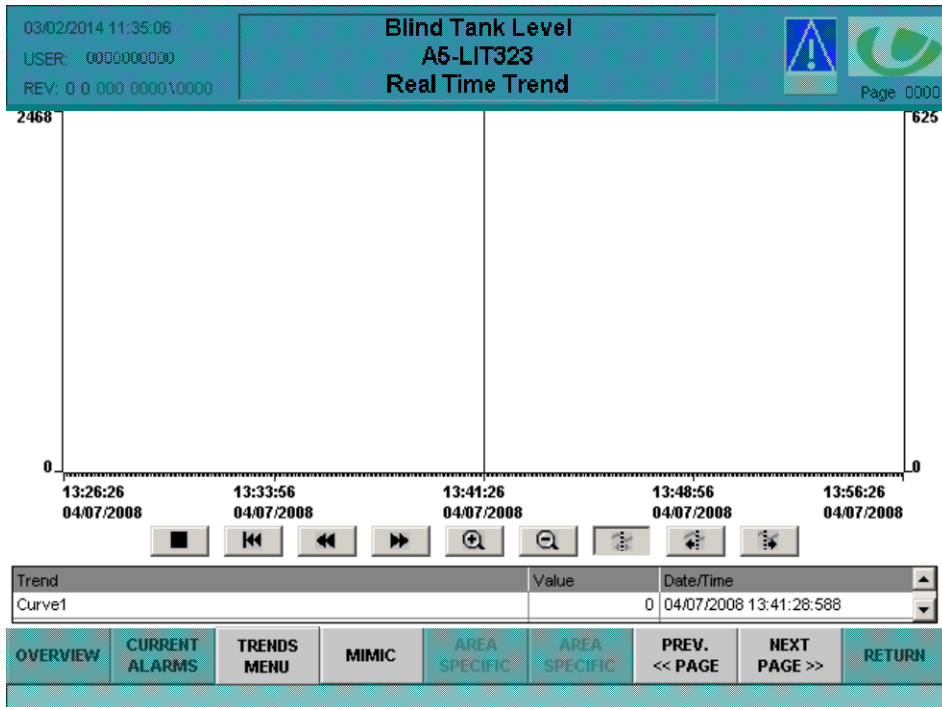
Using template True
Number 513
Visible layer 0;1;2;3;4;5;6;7;8;9;10;11;12;13;14;15;16;17;18;19;20;21;22;23;24;25;26;27;28;29;30;31
Infotext



Screens

|HMI_277 (HMI05)|Screens|5xxxx_HMI|5-TRENDS|5.1 AREA 1 5xxxx_HMI|5-TRENDS|5.1 AREA 1|514_RealTimeTrend_LIT323

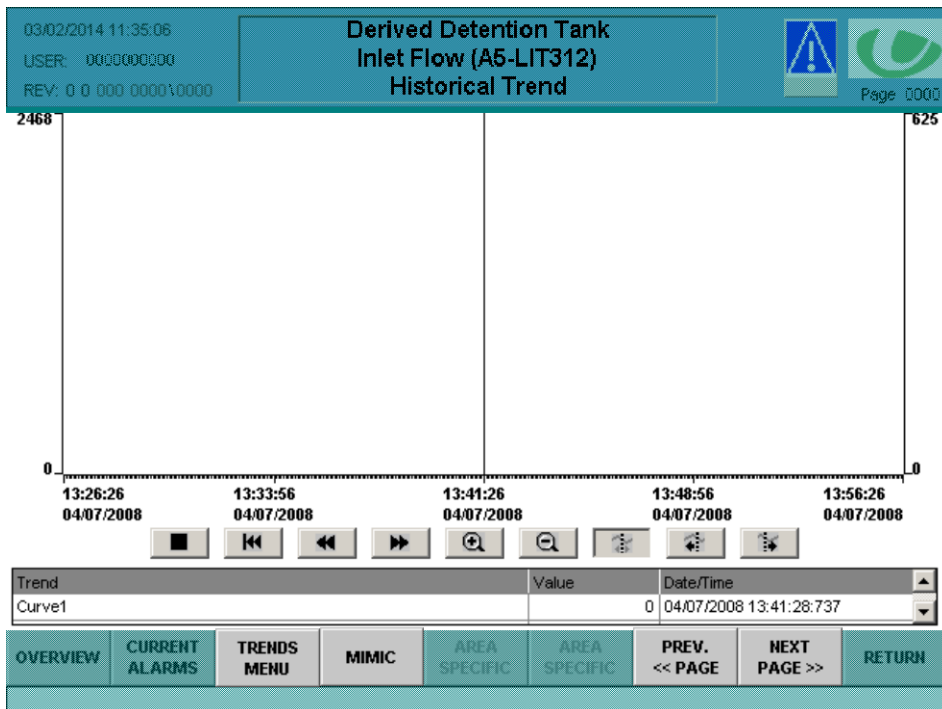
Using template True
Number 514
Visible layer 0;1;2;3;4;5;6;7;8;9;10;11;12;13;14;15;16;17;18;19;20;21;22;23;24;25;26;27;28;29;30;31
Infotext



Screens

| HMI_277 (HMI05) | Screens | 5xxxx_HMI | 5-TRENDS | 5.1 AREA 1 5xxxx_HMI | 5-TRENDS | 5.1 AREA 1 | 521_HistoricalTrend_LIT312

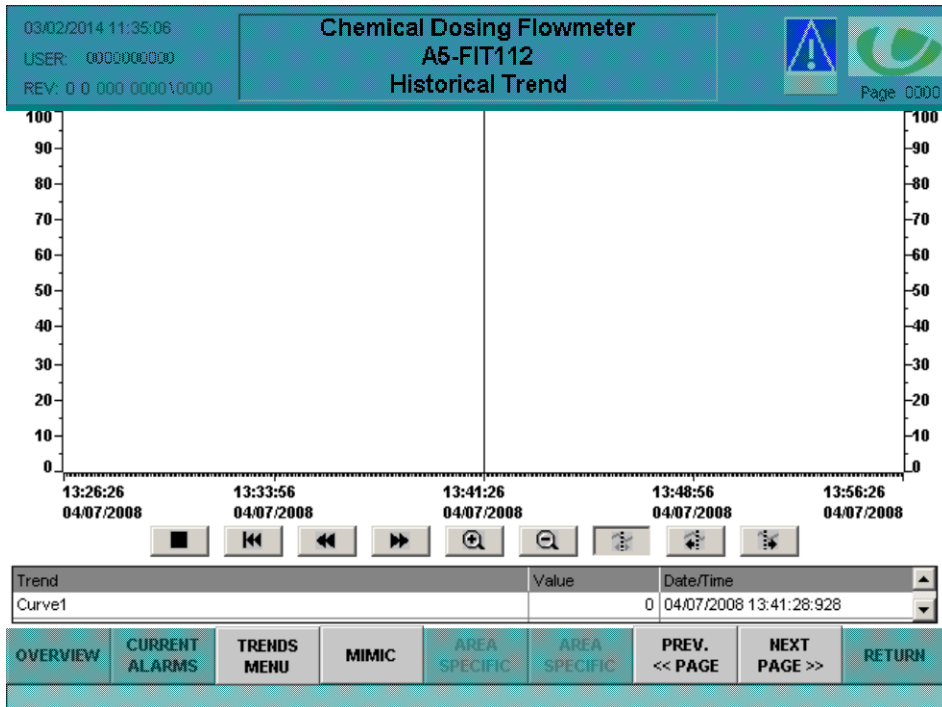
Using template True
Number 521
Visible layer 0;1;2;3;4;5;6;7;8;9;10;11;12;13;14;15;16;17;18;19;20;21;22;23;24;25;26;27;28;29;30;31
Infotext



Screens

|HMI_277 (HMI05)|Screens|5xxxx_HMI|5-TRENDS|5.1 AREA 1 5xxxx_HMI|5-TRENDS|5.1 AREA 1|522_HistoricalTrend_FIT112

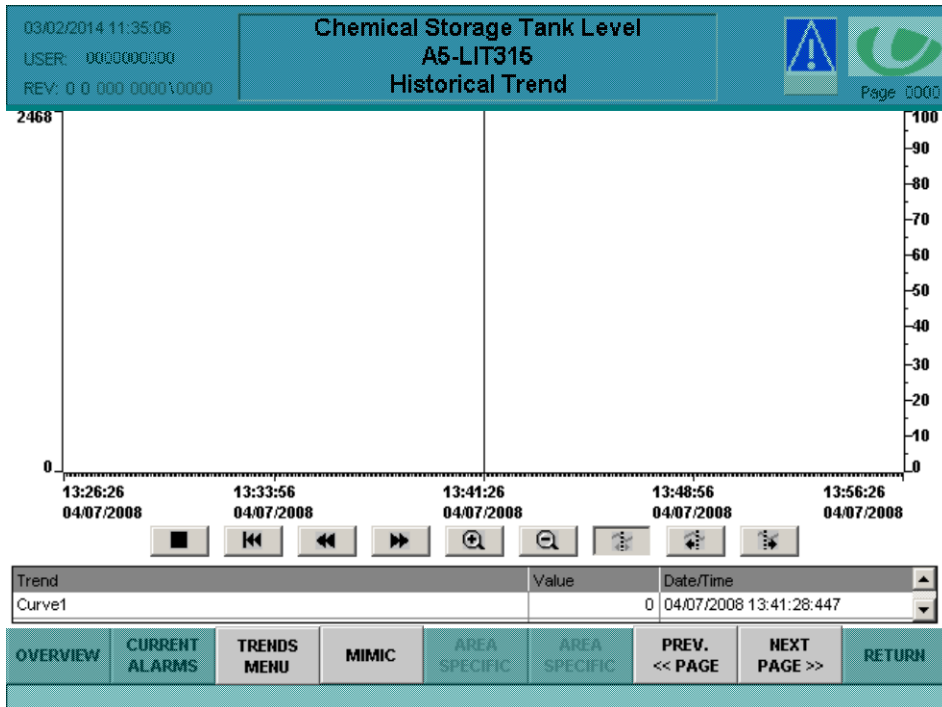
Using template True
Number 522
Visible layer 0;1;2;3;4;5;6;7;8;9;10;11;12;13;14;15;16;17;18;19;20;21;22;23;24;25;26;27;28;29;30;31
Infotext



Screens

|HMI_277 (HMI05)|Screens|5xxxx_HMI|5-TRENDS|5.1 AREA 1 5xxxx_HMI|5-TRENDS|5.1 AREA 1|523_HistoricalTrend_LIT315

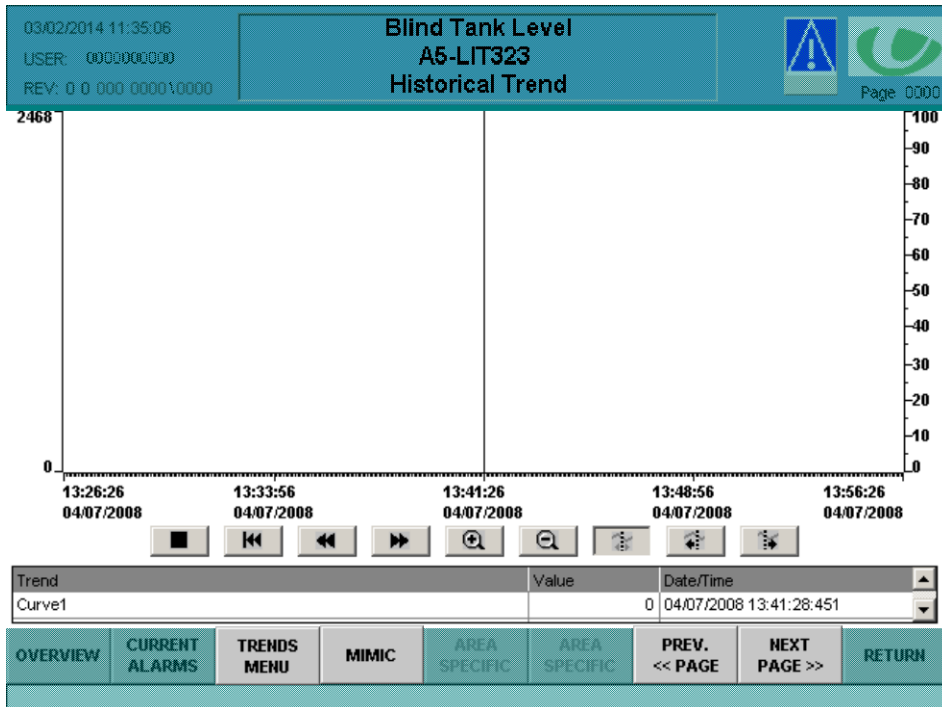
Using template True
Number 523
Visible layer 0;1;2;3;4;5;6;7;8;9;10;11;12;13;14;15;16;17;18;19;20;21;22;23;24;25;26;27;28;29;30;31
Infotext



Screens

|HMI_277 (HMI05)|Screens|5xxxx_HMI|5-TRENDS|5.1 AREA 1 5xxxx_HMI|5-TRENDS|5.1 AREA 1|524_HistoricalTrend_LIT323

Using template True
Number 524
Visible layer 0;1;2;3;4;5;6;7;8;9;10;11;12;13;14;15;16;17;18;19;20;21;22;23;24;25;26;27;28;29;30;31
Infotext

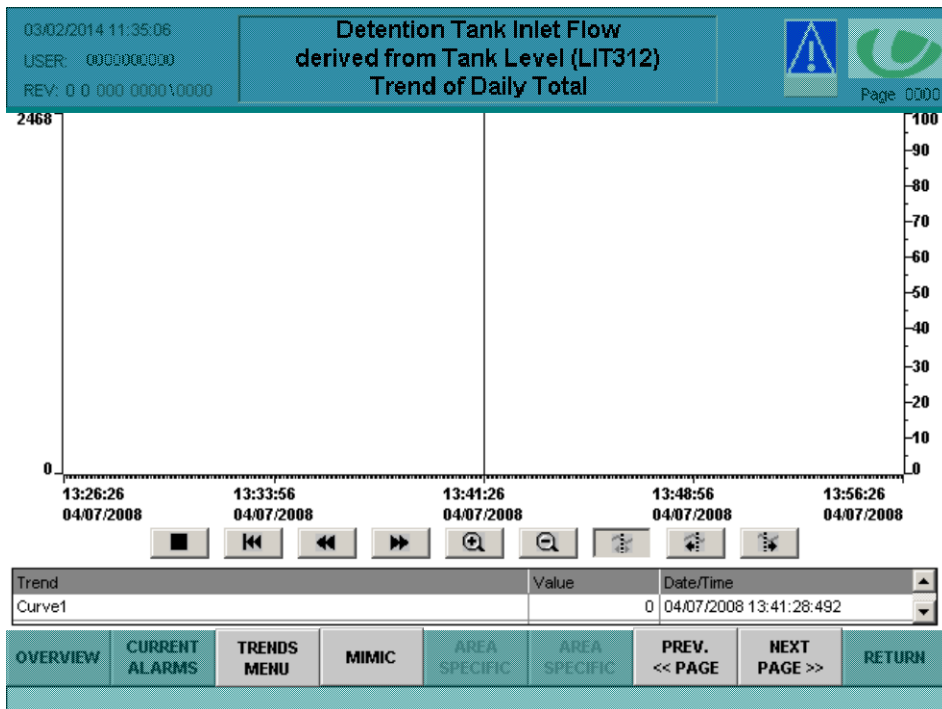


OVERVIEW CURRENT ALARMS TRENDS MENU MIMIC AREA SPECIFIC AREA SPECIFIC PREV. << PAGE NEXT PAGE >> RETURN

Screens

| HMI_277 (HMI05) | Screens | 5xxxx_HMI | 5-TRENDS | 5.1 AREA 1 5xxxx_HMI | 5-TRENDS | 5.1 AREA 1 | 531_TrendOfDayTotal_LIT312

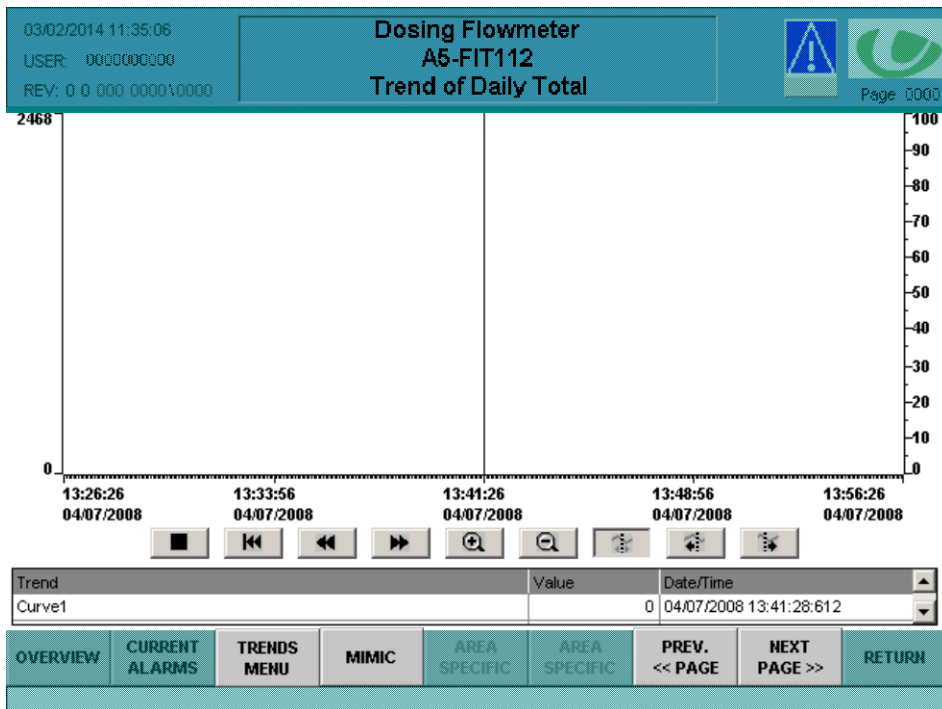
Using template True
Number 531
Visible layer 0;1;2;3;4;5;6;7;8;9;10;11;12;13;14;15;16;17;18;19;20;21;22;23;24;25;26;27;28;29;30;31
Infotext



Screens

|HMI_277 (HMI05)|Screens|5xxxx_HMI|5-TRENDS|5.1 AREA 1 5xxxx_HMI|5-TRENDS|5.1 AREA 1|532_TrendOfDayTotal_FIT112

Using template True
Number 532
Visible layer 0;1;2;3;4;5;6;7;8;9;10;11;12;13;14;15;16;17;18;19;20;21;22;23;24;25;26;27;28;29;30;31
Infotext



Screens

|HMI_277 (HMI05)|Screens|5xxxx_HMI|5-TRENDS

5xxxx_HMI|5-TRENDS|500_TRENDS_MENU

Using template True
Number 500
Visible layer 0;1;2;3;4;5;6;7;8;9;10;11;12;13;14;15;16;17;18;19;20;21;22;23;24;25;26;27;28;29;30;31
Infotext



would look nicer (to my eye at least) if all the buttons were the same size, and grid spacing was consistent.